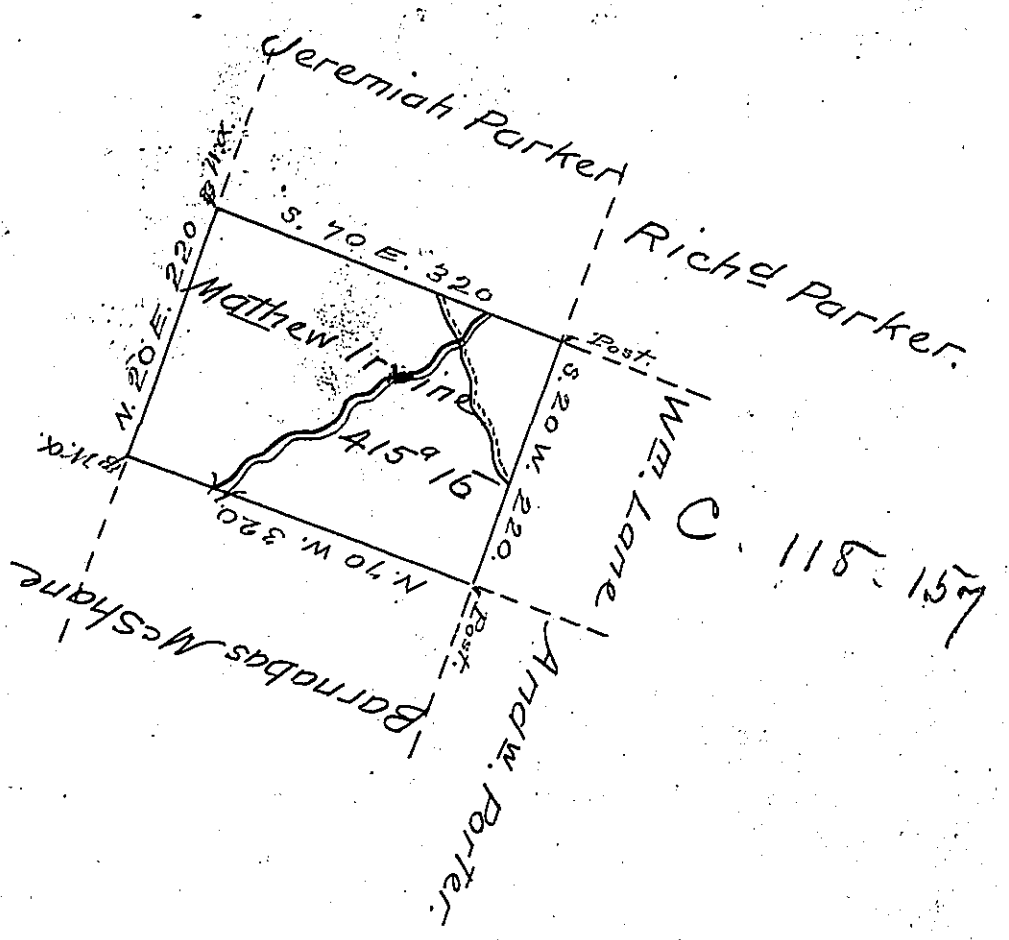


C-105-1



1
 Wm
 ps.
 5.
 8.
 20.
 53 1/2
 48 1/2
 56 1/2

In pursuance of a Warrant Dated 15th Feby 1794
 Surveyed the 4th day of October 1794 To Mathew -
 Irvine The above Described Tract of Land Situate on
 the waters leading into the Susquehannah River
 between Garners Creek and Buttermilk Falls Creek
 in Luzerne County Containing Four hundred and
 fifteen acres and sixteen perches and the allowance
 of six & Cent.

Anty Crothers D.S.

To Danl Brodhead Esquire
 Surveyor Genl.

d
 been
 John-
 eghe-
 and
 now
 of Jan
 ers
 the
 River
 tion.
 s

IN TESTIMONY that the above is a copy of the original remaining on file in
 the Department of Internal Affairs of Pennsylvania, made
 conformably to an Act of Assembly approved the 16th day of
 February, 1833, I have hereunto set my Hand and caused
 the Seal of said Department to be affixed at Harrisburg,
 this 17th 17th 17th day of May 1905.

Joseph P. Brown
 Secretary of Internal Affairs.

e in
 ade
 y of
 used
 urg,
 5.
 s.